

How to Take the Driving Skills Test

(For those changing a Foreign License to a Japanese License)

Motor Vehicle Licensing Center – Test Course

1. Preventing an Accident, etc.

Follow the examiner's instructions and take care not to cause an accident. You will not be allowed to take the test under the following circumstances:

- ✓ You are wearing inappropriate clothes/footwear (sandals, high heels, etc.)
- ✓ You forget to bring necessary items like prescription eye wear.
- ✓ If there is suspicion you are under the influence of alcohol, pills or other drugs.

Note: Those who will not be taking the driving test will be asked to wait in the Waiting Room.

2. Regarding Preliminary Inspection of the Test Course:

The course route will be posted in the Waiting Room of the Test Course, so be sure to memorize it before you take your test. Also, from noon till 1:00 pm you will be allowed to enter the course and inspect it.

3. A Note About the Driving Test:

You will be tested on not only your compliance with Japanese Traffic Laws, but also on smooth, efficient driving techniques.

4. Meeting Place & Time for the Driving Skills Test:

Meet in the Driving Course Waiting Room at 1:00 pm.

5. How to Maneuver the Course:

1. Getting Started

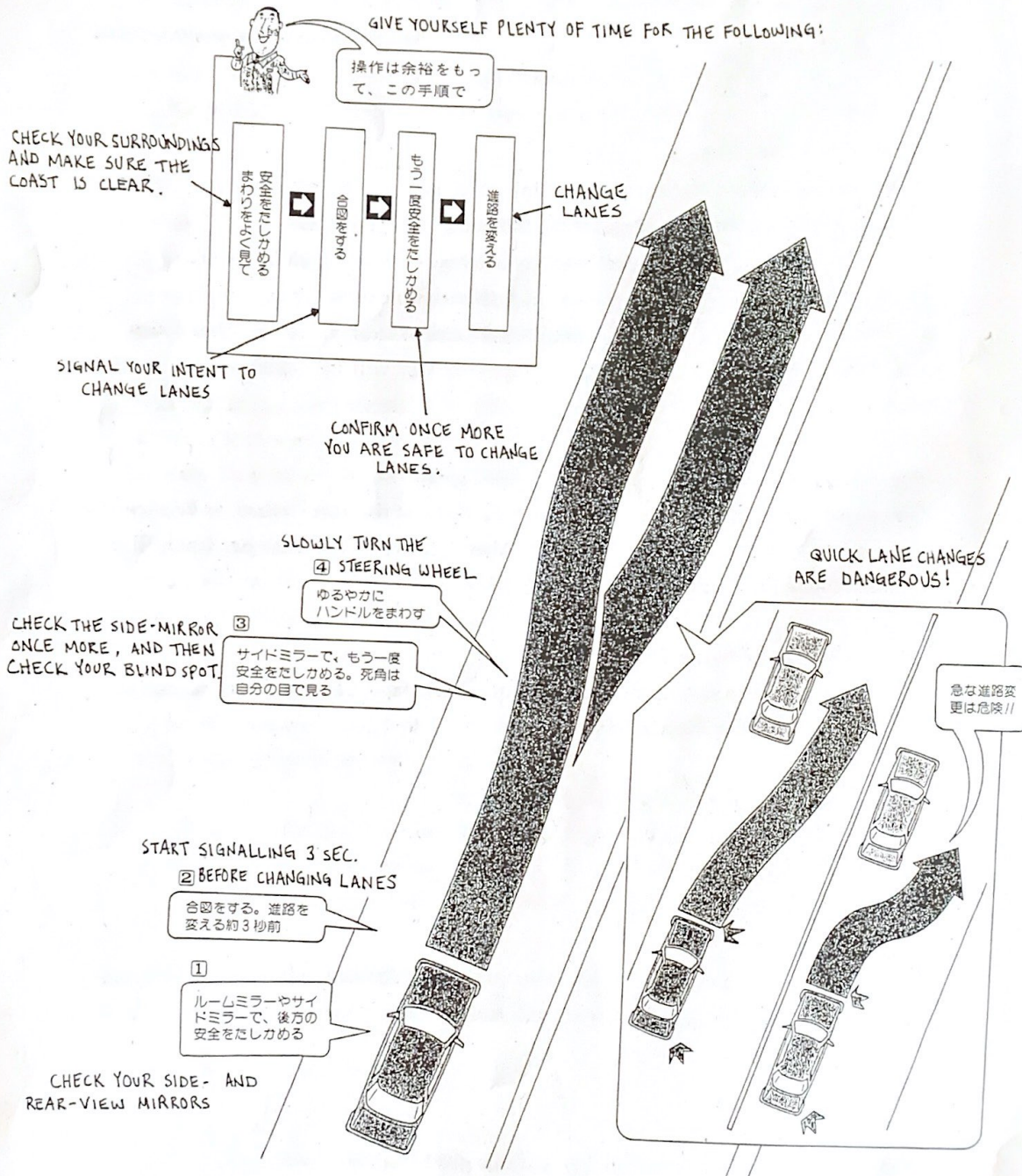
After getting into the car, complete your preliminary safety measures, signal your intention to depart and take note of your surroundings. Leave only when traffic is clear behind and to your right.

2. Driving Speed

Proceed at a pace that is safe and acceptable given the road conditions.

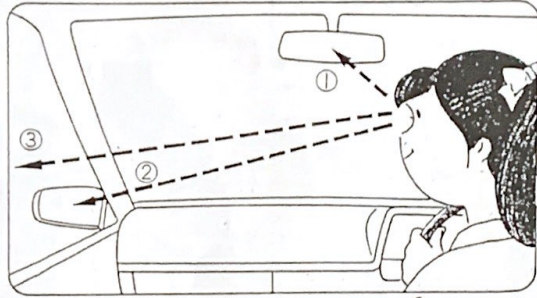
3. SIGNALLING & CHANGING LANES

(3) 合図の時期と進路変更の手順



HOW TO CHECK BEHIND & AROUND THE VEHICLE WHEN CHANGING LANES

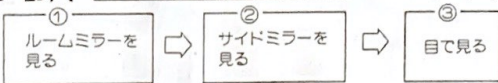
しんろ へんこう
進路変更をするときの、
こうほう そくほう
後方や側方の安全のたしかめかた



WHEN CHANGING LANES TO THE LEFT

ひだり しんろ へんこう
左へ進路変更をする

③ LOOK WITH YOUR OWN EYES

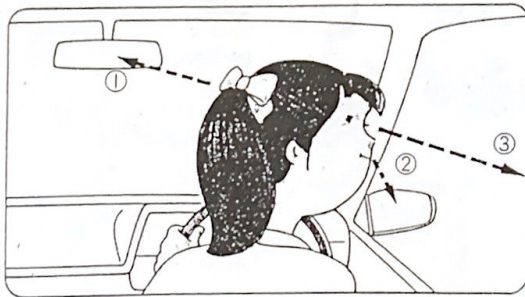


① CHECK YOUR REAR-VIEW MIRROR

② CHECK YOUR SIDE-MIRROR

サイドミラーで見えない部分

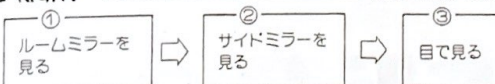
YOU CANNOT SEE THIS AREA IN THE SIDE MIRROR



WHEN CHANGING LANES TO THE RIGHT

みぎ 右へ進路変更をする

③ LOOK WITH YOUR OWN EYES



① CHECK YOUR REAR-VIEW MIRROR

② CHECK YOUR SIDE-MIRROR

サイドミラーで見えない部分

YOU CANNOT SEE THIS AREA IN THE SIDE MIRROR

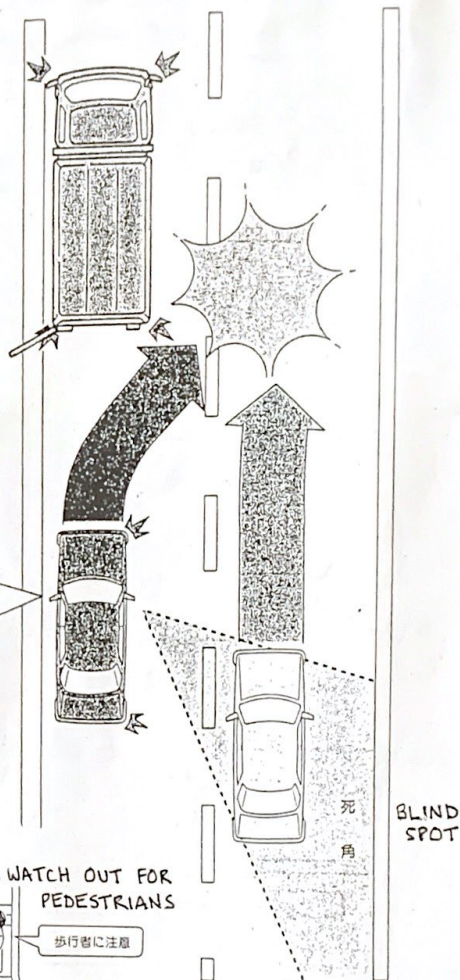
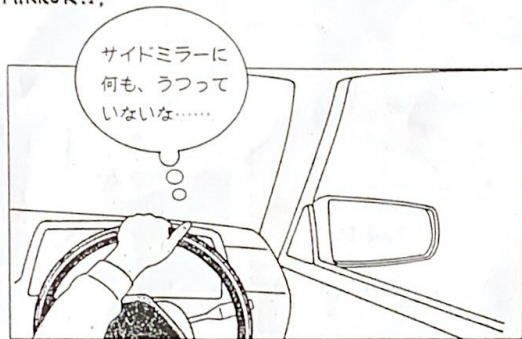


IT IS DANGEROUS IF YOU
DON'T CHECK YOUR BLIND
SPOT WITH YOUR OWN EYES



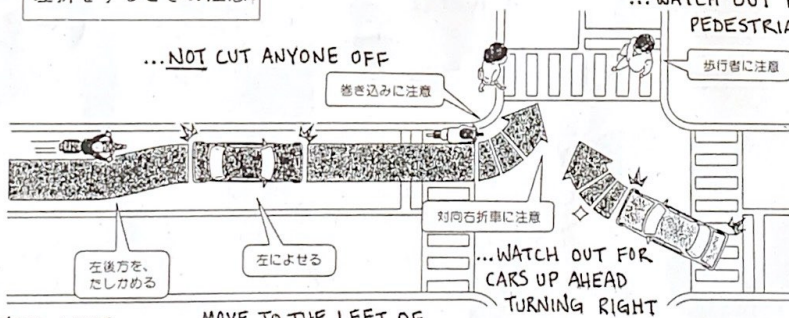
死角は、自分
の目でたしかめ
ないと危険です

"I DON'T SEE ANYTHING IN
THE SIDE-MIRROR..."



WHEN TURNING LEFT BE SURE TO:

左折をするときの注意:



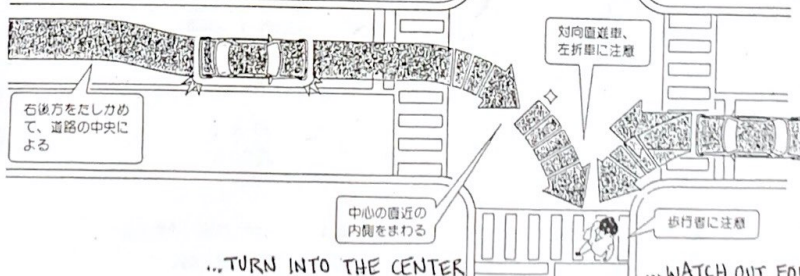
... CHECK YOUR LEFT

... MOVE TO THE LEFT OF
THE ROAD

... WATCH OUT FOR
CARS UP AHEAD
TURNING RIGHT

WHEN TURNING RIGHT BE SURE TO:

右折をするときの注意:



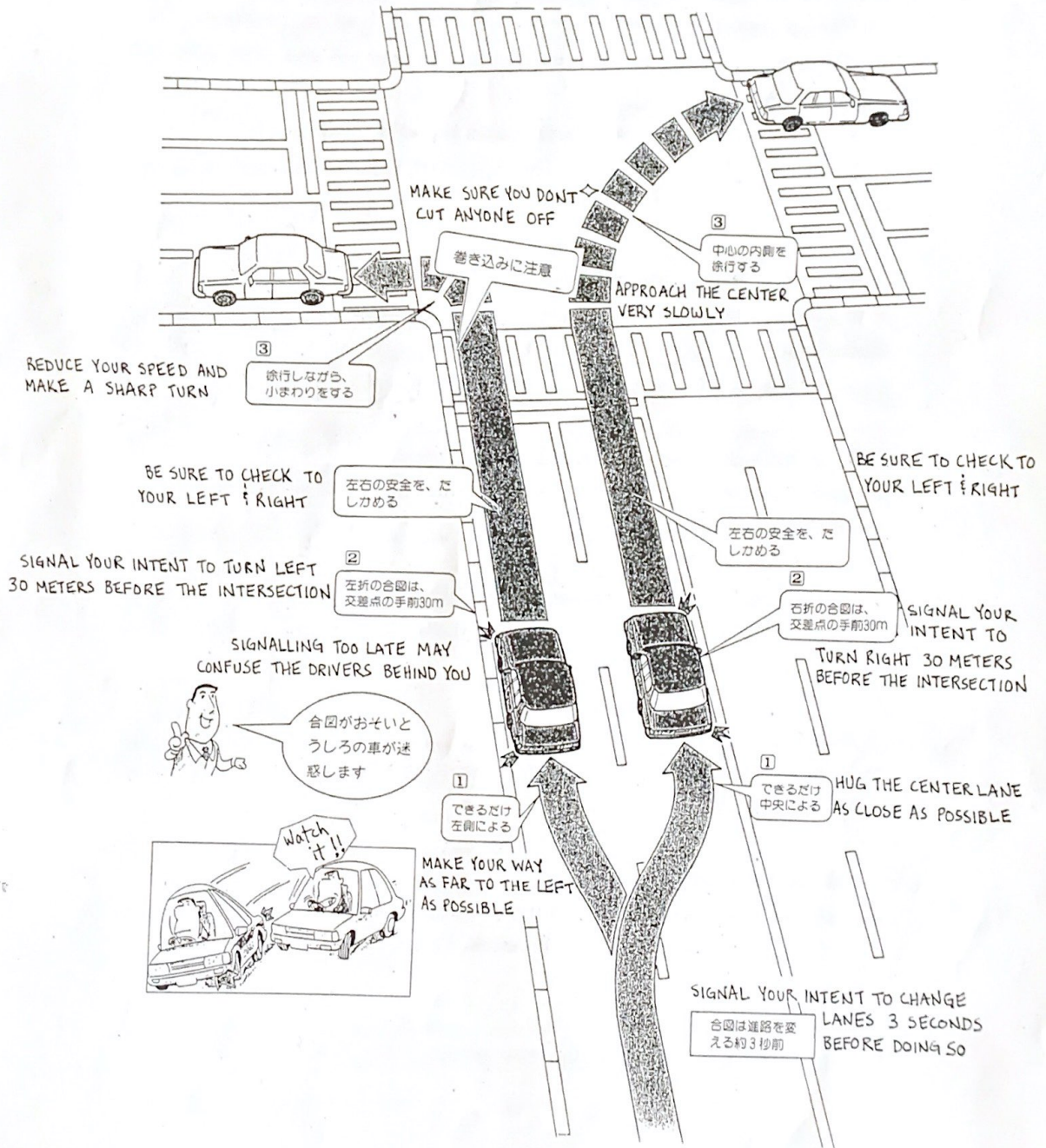
... CHECK YOUR RIGHT AND
MOVE TOWARD THE
CENTER LANE

... TURN INTO THE CENTER
OF THE INTERSECTION

... WATCH OUT FOR
PEDESTRIANS

4. RIGHT & LEFT TURNS AT THE INTERSECTION

(4) 交差点の右・左折



5. Checking for Safety

- a.) When changing lanes, make sure you check both behind and on either side.
- b.) When going through an intersection, check to your left and right sides before you enter.
- c.) When backing up, be sure to check behind and all around for safety.
- d.) When exiting the vehicle make sure you check behind you before opening the door.

6. What To Do If You Get Stuck On a Roadside Curb

If you happen to get a wheel stuck on or on the other side of a roadside curb, immediately stop the vehicle and back up to where you were before. If you find yourself about to ride up onto a curb, again, stop the vehicle and back up.

7. Driving On the Courses with Sharp Turns (S-Course, etc.)

If you find yourself about to hit a pole or get stuck on a curb, immediately stop the vehicle, back up and try again.

8. When Passing Through an Intersection You Cannot See Clearly

When approaching an intersection with visual obstructions, slow the vehicle down, check both ways and then proceed.

9. Stopping

Come to a complete stop just at the stop line (a big, white line on the road), check both ways and then proceed.

10. Applying the Brakes

As a general rule, when you are coming to a stop, pump your brakes gently off and on to signal your intent to stop to the vehicle(s) behind you.

11. Returning to the Starting Point

Pull the vehicle off to the left as far as possible and then stop.